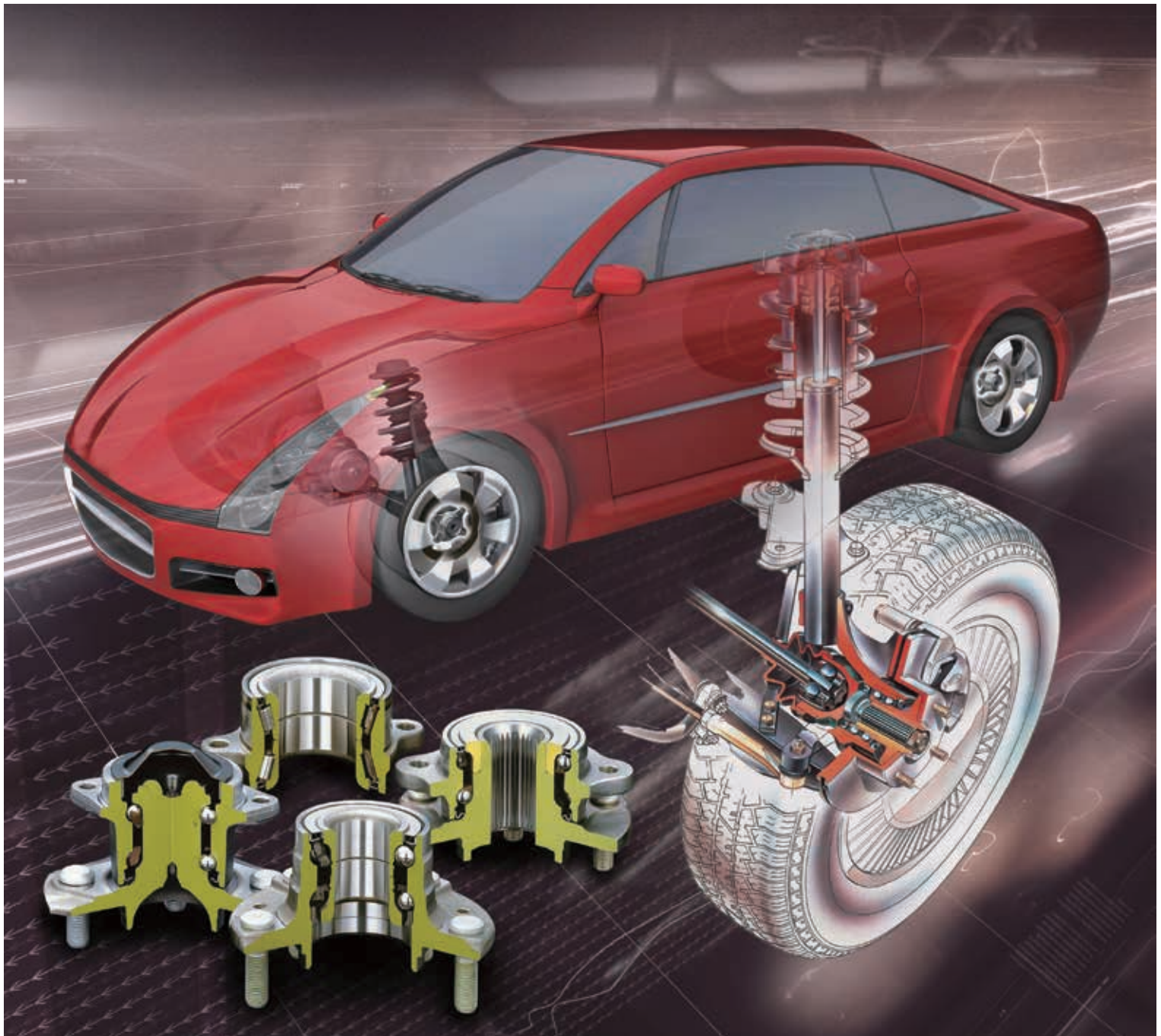


Wheel Bearings

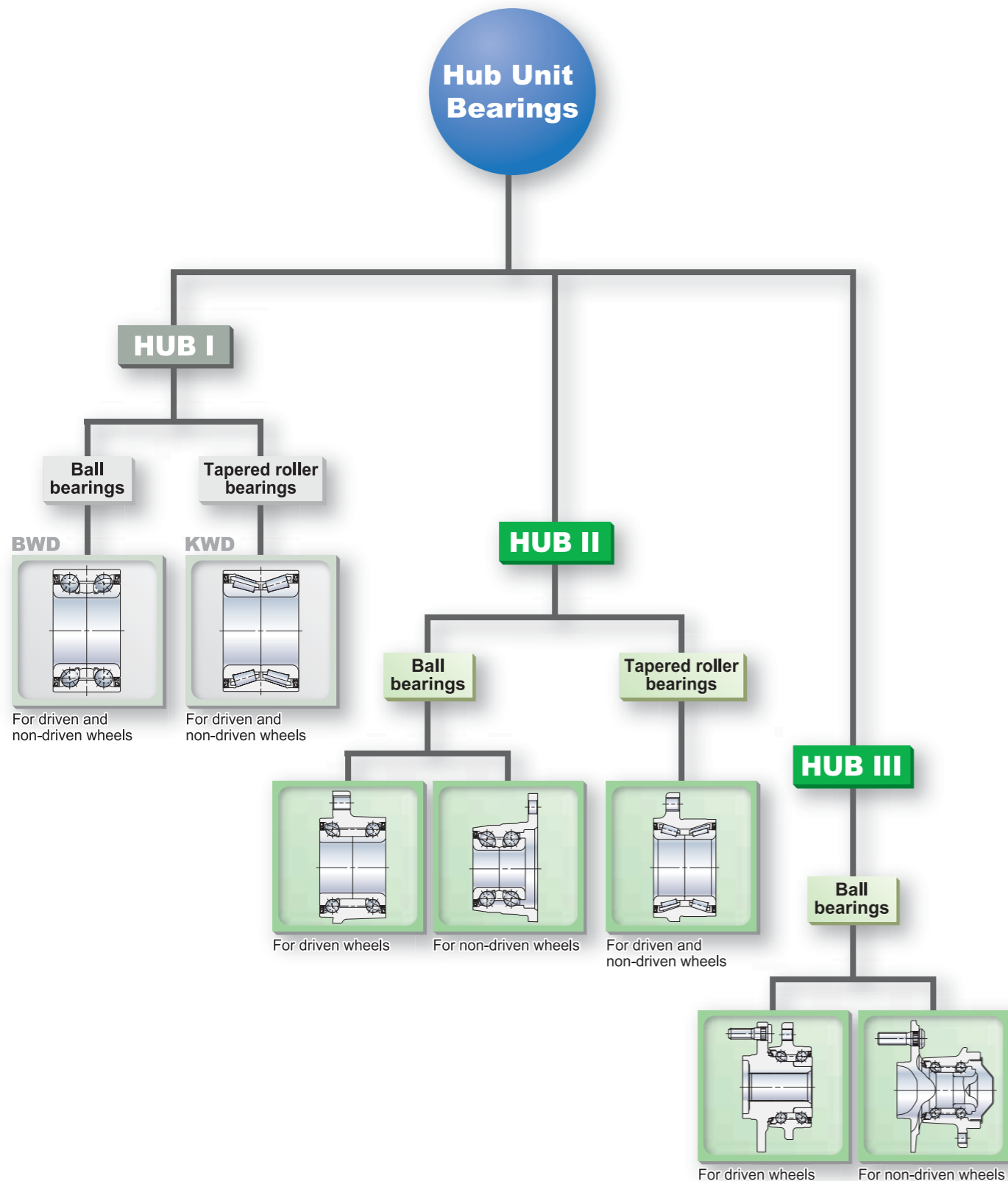
HUBII & HUBIII

For Automotive Aftermarket



Types of Hub Unit Bearings

Hub unit bearings for automobile wheels are comprised of bearing rings, rolling elements, and cages, similar to general-purpose rolling bearings.



HUB II

NSK uses bearing reference for hub unit bearings clarifying boundary dimensions, types, and specification codes. Below are examples of bearing reference:

Example: **ZA - 27 BWK 04 D2a y2**

Material code
Special code
Serial No.
Bore diameter 27 mm
HUB II (Ball bearings)

Example: **ZA - 54 KWH 01 y2**

Material code
Serial No.
Bore diameter 54 mm
HUB II (Tapered roller bearings)



BWK (Ball bearings) for non-driven wheels



KWH (Tapered roller bearings) for non-driven and driven wheels

HUB III

NSK uses bearing reference for hub unit bearings clarifying boundary dimensions, types, and specification codes. Below are examples of bearing reference:

Example: **ZA - 52 BWKH 02 y5**

Material code
Serial No.
Ball pitch diameter 52 mm
HUB III (Ball bearings)

Example: **ZA - 68 BWKH S 01 y5**

Material code
Serial No.
Sensor integral
Ball pitch diameter 68 mm
HUB III (Ball bearings)



BWKH (Ball bearings) for non-driven wheels



BWKH (Ball bearings) for driven wheels

Classification by vehicle model

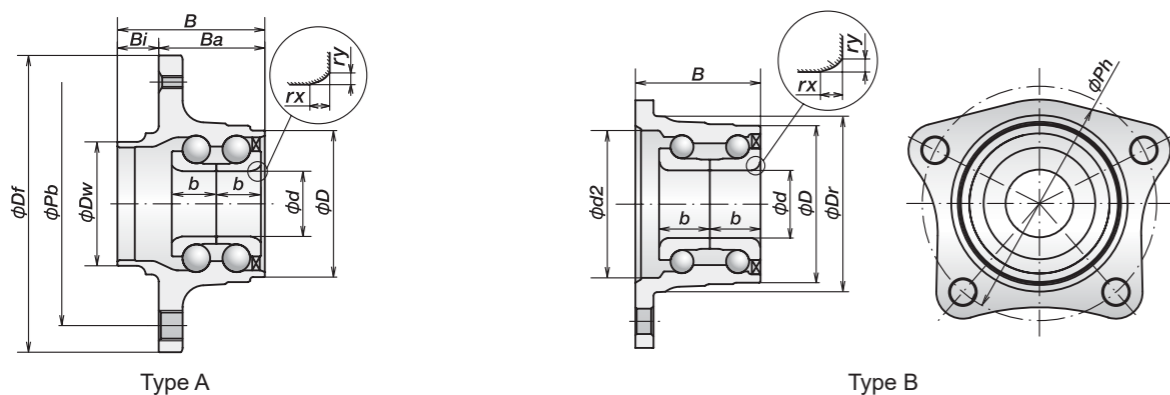
MODEL / TYPE (Information)	YEAR	ORIGINAL No.-1	ORIGINAL No.-2	NSK No.	REFERENCE PAGE
AUDI					
A3					
PQ35/PQ36 (FF, For All until 1,9 l Diesel-Engine and < 77kw)	2003/03-2013/12	1K0 407 621E	—	ZA-57BWKH04D1-Y-01 E	10
PQ35/PQ36 (For All > 77kw)	2003/03-2013/12	1K0 407 621C [EU] 1K0 407 621G [US] 1K0 407 621 [CHINA]	—	ZA-60BWKH07R3-Y-01 E	10
PQ35/PQ36 (FF)	2003/03-2013/12	1K0 501 611 G 1K0 501 611 S	1K0 598 611 (KIT, SKF)	ZA-30BWK26-Y-A2-01 E	8
PQ35/PQ36 (4WD)	2003/03-2013/12	1K0 407 621C [EU] 1K0 407 621G [US] 1K0 407 621 [CHINA]	—	ZA-60BWKH07R3-Y-01 E	10
A4					
MLB	2007/10-	8K0 407 625 A 8K0 407 625 E 8K0 407 625 G	—	ZA-62BWK01W-Y-B-01 E	8
A4 Allroad					
MLB	2009/03-	8K0 407 625 A 8K0 407 625 E 8K0 407 625 G	—	ZA-62BWK01W-Y-B-01 E	8
A5					
MLB	2007/01-	8K0 407 625 A 8K0 407 625 E 8K0 407 625 G	—	ZA-62BWK01W-Y-B-01 E	8
A5 Cabrio					
MLB	2008/11-	8K0 407 625 A 8K0 407 625 E 8K0 407 625 G	—	ZA-62BWK01W-Y-B-01 E	8
A5 Sportback					
MLB	2009/07-	8K0 407 625 A 8K0 407 625 E 8K0 407 625 G	—	ZA-62BWK01W-Y-B-01 E	8
A8					
MLB	2010/01-	8K0 407 625 A 8K0 407 625 E 8K0 407 625 G	—	ZA-62BWK01W-Y-B-01 E	8
Q5					
MLB	2008/09-	8K0 407 625 A 8K0 407 625 E 8K0 407 625 G	—	ZA-62BWK01W-Y-B-01 E	8
TT					
PQ35/PQ36 (FF, For All until 1,9 l Diesel-Engine and < 77kw)	2006/06-	1K0 407 621E	—	ZA-57BWKH04D1-Y-01 E	10
PQ35/PQ36 (For All > 77kw)	2006/06-	1K0 407 621C [EU] 1K0 407 621G [US] 1K0 407 621 [CHINA]	—	ZA-60BWKH07R3-Y-01 E	10
PQ35/PQ36 (FF)	2006/06-	1K0 501 611 G 1K0 501 611 S	1K0 598 611 (KIT, SKF)	ZA-30BWK26-Y-A2-01 E	8
PQ35/PQ36 (4WD)	2006/06-	1K0 407 621C [EU] 1K0 407 621G [US] 1K0 407 621 [CHINA]	—	ZA-60BWKH07R3-Y-01 E	10
BMW					
MINI					
R50 (M14*1.25), R56, R57	—	6 776 671	—	ZA-62BWKH01E-Y--01 E	10
R50 (M12*1.5)	—	6 756 830	—	ZA-49BWKH22B-Y--01 E	10
GM					
CHEVY EQUINOX					
Unknown (Less ABS)	—	02042K2078	—	ZA-68BWKH02D-Y-01 F	10
Unknown (With ABS)	—	0204292072 02042K2077	—	ZA-68BWKHS01E-Y-01 F	10
Unknown (Less ABS)	—	02042L2235	—	ZA-60BWKH06L-Y-01 F	10
Unknown (With ABS)	—	02042L2234	—	ZA-60BWKHS01L-Y-01 F	10
SATURN VUE					
Unknown (Less ABS)	—	02042K2078	—	ZA-68BWKH02D-Y-01 F	10
Unknown (With ABS)	—	0204292072 02042K2077	—	ZA-68BWKHS01E-Y-01 F	10
Unknown (Less ABS)	—	02042L2235	—	ZA-60BWKH06L-Y-01 F	10
Unknown (With ABS)	—	02042L2234	—	ZA-60BWKHS01L-Y-01 F	10
HONDA					
Accord					
Unknown (91M)	—	44200-SM4-013	—	ZA-43BWK03D-Y-2CA-01	8
Unknown (91M, USA)	—	44200-SL5-003	—	ZA-43BWK04-Y-2CA2-01	8
MITSUBISHI					
PAJERO					
BK (Short Body + 16 inch Brake)	2006/09-	3885A013	—	ZA-/HO/50KWH01M-Y-01	8
BK (Long body, 17 inch brake)	2006/09-	3885A014	—	ZA-/HO/52KWH01-Y--01	8
CK	1999/07-2006/12	3885A013	—	ZA-/HO/50KWH01M-Y-01	8
NISSAN					
CARAVAN					
E25	2001/04-2011/10	40210-VW610	—	ZA-/HO/51KWH01N-Y-01	8

Classification by vehicle model

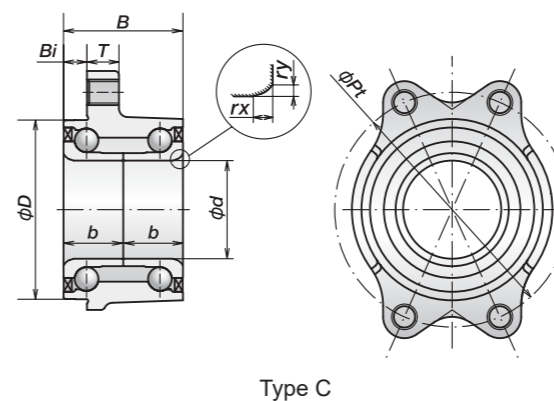
MODEL / TYPE (Information)	YEAR	ORIGINAL No.-1	ORIGINAL No.-2	NSK No.	REFERENCE PAGE
ELGRAND					
E51	2002/05-2010/08	40210-WL000 40210-WL020	—	ZA-/HO/51KWH01R-Y-01	8
E51	2002/05-2010/08	43210-WL000	—	ZA-/HO/50KWH02A-Y-01	8
URVAN					
E25	2001/07-2011/10	40210-VW610	—	ZA-/HO/51KWH01N-Y-01	8
PSA					
EXPERT					
G9 (DISK BRAKE)	2006/10-	1401393280 1440088280	—	ZA-56BWKH06J-Y--01 E	10
G9 (DRUM BRAKE)	2006/10-	1400199280 1401393480	—	ZA-56BWKH05D-Y--01 E	10
JUMPY					
G9 (DISK BRAKE)	2006/10-	1401393280 1440088280	—	ZA-56BWKH06J-Y--01 E	10
G9 (DRUM BRAKE)	2006/10-	1400199280 1401393480	—	ZA-56BWKH05D-Y--01 E	10
SEAT					
ALTEA					
PQ35/PQ36 (FF, For All until 1,9 l Diesel-Engine and < 77kw)	2004/03-	1K0 407 621E	—	ZA-57BWKH04D1-Y-01 E	10
PQ35/PQ36 (For All > 77kw)	2004/03-	1K0 407 621C [EU] 1K0 407 621G [US] 1K0 407 621 [CHINA]	—	ZA-60BWKH07R3-Y-01 E	10
PQ35/PQ36 (FF)	2004/03-	1K0 501 611 G 1K0 501 611 S	1K0 598 611 (KIT, SKF)	ZA-30BWK26-Y-A2-01 E	8
PQ35/PQ36 (4WD)	2004/03-	1K0 407 621C [EU] 1K0 407 621G [US] 1K0 407 621 [CHINA]	—	ZA-60BWKH07R3-Y-01 E	10
ALTEA XL					
PQ35/PQ36 (FF, For All until 1,9 l Diesel-Engine and < 77kw)	2004/03-	1K0 407 621E	—	ZA-57BWKH04D1-Y-01 E	10
PQ35/PQ36 (For All > 77kw)	2004/03-	1K0 407 621C [EU] 1K0 407 621G [US] 1K0 407 621 [CHINA]	—	ZA-60BWKH07R3-Y-01 E	10
PQ35/PQ36 (FF)	2004/03-	1K0 501 611 G 1K0 501 611 S	1K0 598 611 (KIT, SKF)	ZA-30BWK26-Y-A2-01 E	8
PQ35/PQ36 (4WD)	2004/03-	1K0 407 621C [EU] 1K0 407 621G [US] 1K0 407 621 [CHINA]	—	ZA-60BWKH07R3-Y-01 E	10
LEON					
PQ35/PQ36 (FF, For All until 1,9 l Diesel-Engine and < 77kw)	2005/05-2012/10	1K0 407 621E	—	ZA-57BWKH04D1-Y-01 E	10
PQ35/PQ36 (For All > 77kw)	2005/05-2012/10	1K0 407 621C [EU] 1K0 407 621G [US] 1K0 407 621 [CHINA]	—	ZA-60BWKH07R3-Y-01 E	10
PQ35/PQ36 (FF)	2005/05-2012/10	1K0 501 611 G 1K0 501 611 S	1K0 598 611 (KIT, SKF)	ZA-30BWK26-Y-A2-01 E	8
PQ35/PQ36 (4WD)	2005/05-2012/10	1K0 407 621C [EU] 1K0 407 621G [US] 1K0 407 621 [CHINA]	—	ZA-60BWKH07R3-Y-01 E	10
TOLEDO					
PQ35/PQ36 (FF, For All until 1,9 l Diesel-Engine and < 77kw)	2004/09-2010/06	1K0 407 621E	—	ZA-57BWKH04D1-Y-01 E	10
PQ35/PQ36 (For All > 77kw)	2004/09-2010/06	1K0 407 621C [EU] 1K0 407 621G [US] 1K0 407 621 [CHINA]	—	ZA-60BWKH07R3-Y-01 E	10
PQ35/PQ36 (FF)	2004/09-2010/06	1K0 501 611 G 1K0 501 611 S	1K0 598 611 (KIT, SKF)	ZA-30BWK26-Y-A2-01 E	8
PQ35/PQ36 (4WD)	2004/09-2010/06	1K0 407 621C [EU] 1K0 407 621G [US] 1K0 407 621 [CHINA]	—	ZA-60BWKH07R3-Y-01 E	10
SKODA					
OCTAVIA					
PQ35/PQ36 (FF, For All until 1,9 l Diesel-Engine and < 77kw)	2004/04-2013/07	1K0 407 621E	—	ZA-57BWKH04D1-Y-01 E	10
PQ35/PQ36 (For All > 77kw)	2004/04-2013/07	1K0 407 621C [EU] 1K0 407 621G [US] 1K0 407 621 [CHINA]	—	ZA-60BWKH07R3-Y-01 E	10
PQ35/PQ36 (FF)	2004/04-2013/07	1K0 501 611 G 1K0 501 611 S	1K0 598 611 (KIT, SKF)	ZA-30BWK26-Y-A2-01 E	8
PQ35/PQ36 (4WD)	2004/04-2013/07	1K0 407 621C [EU] 1K0 407 621G [US] 1K0 407 621 [CHINA]	—	ZA-60BWKH07R3-Y-01 E	10
SUPERB					
PQ35/PQ36 (FF, For All until 1,9 l Diesel-Engine and < 77kw)	2008/04-	1K0 407 621E	—	ZA-57BWKH04D1-Y-01 E	10
PQ35/PQ36 (For All > 77kw)	2008/04-	1K0 407 621C [EU] 1K0 407 621G [US] 1K0 407 621 [CHINA]	—	ZA-60BWKH07R3-Y-01 E	10
PQ35/PQ36 (FF)	2008/04-	1K0 501 611 G 1K0 501 611 S	1K0 598 611 (KIT, SKF)	ZA-30BWK26-Y-A2-01 E	8

Classification by bearing type and NSK P/N

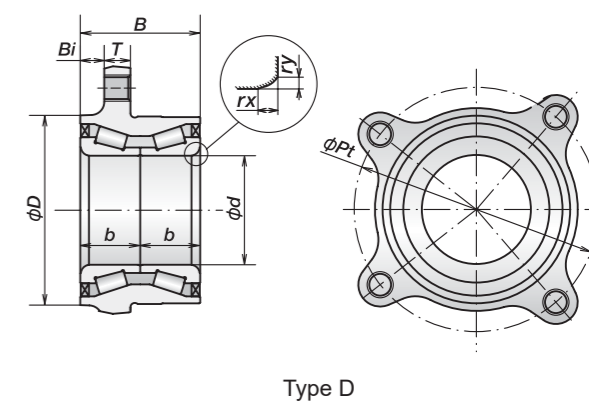
BWK Type For non-driven Wheels



BWK Type For driven Wheels



BWK Type For driven/non-driven Wheels



BEARING TYPE	NSK No.	ORIGINAL No.-1	ORIGINAL No.-2	Drawing Type	MAKER	MODEL / TYPE (Information)	POSITION *1) *2)	
BWK	ZA-30BWK21D-Y-A-01 E ZA-30BWK26-Y-A2-01 E	1K0 501 611 G 1K0 501 611 S	1K0 598 611 (KIT, SKF)	A	VOLKS WAGEN	PQ35/PQ36 (FF) AUDI : A3 , TT SEAT : ALTEA , ALTEA XL , LEON , TOLEDO SKODA : OCTAVIA , SUPERB , YETI VW : CADDY VAN , GOLF , GOLF PLUS , SCIROCCO , TOURAN MQB1 (FF, Car name is unknown.)	R	
	BWK	ZA-28BWK12-Y-CP4*01 (Without NUT)	42409-12020 (Without NUT) 42409-19015 (With NUT)	42421-19015 42421-19025	B	TOYOTA	COROLLA/SPRINTER (AE91, AE92 (Less ABS), CE90, EE90, AE100, 101, 110, 111, CE100, 110, 113, EE101, 111), LEVIN / TRUENO (AE9# (Less ABS), LEVIN / CERES / TRUENO / MARINO (AE10#), SPRINTER CARIB (AE111)	R
BWK	ZA-30BWK10-G-3-Y--01	42409-20020	42409-20010	B	TOYOTA	CARINA FF (AT19#, CT190, ST190 : 2WD (FF), Less ABS, Drum Brake) CORONA (AT190, CT190, ST190, ST191 : 2WD(FF), Less ABS, Drum Brake, EX-Saloon, GX, Select-Saloon, TYPE1) CALDINA (CT190, ST190, 191 : 2WD (FF), Less ABS, Drum Brake)	R	
BWK	ZA-30BWK17A-Y-2CP-01	42409-33010 42409-33030	42409-33020	B	TOYOTA	WINDOM (VCV1#), SEPTER Sedan (SXV10, VCV10)	R	
BWK	ZA-38BWK01J-Y-2CA-01	42409-42010	-	C	TOYOTA	IPSUM (SXM15), NADIA (ACN15, SXN15), GAIA (ACM15, SXM15), RAV4 (SXA10, 11)	R	
BWK	ZA-43BWK03D-Y-2CA-01	44200-SM4-013	-	C	HONDA	91M Accord	F	
BWK	ZA-43BWK04-Y-2CA2-01	44200-SL5-003	-	C	HONDA	91M Accord For the United States	F	
BWK	ZA-62BWK01J-Y-2-01 E ZA-62BWK01N-Y-2-01 E	8K0 407 625 A 8K0 407 625 E 8K0 407 625 G	-	C	Audi	A4 (AU481, MLB), A4 Allroad (AU486, MLB), A5 (AU484, MLB), A5 Cabrio (AU485, MLB), A5 Sportback (AU483, MLB), A8 (AU641, MLB), Q5 (AU416, MLB)	F	
	KWH	ZA-/HO/50KWH01M-Y-01	3885A013	-	D	DAEWOO	DAEWOO NUBIRA (CK), DAEWOO NUBIRA (BK : Short Body + 16 inch Brake)	F
KWH	ZA-/HO/50KWH02-Y--01 (old) ZA-/HO/50KWH02A-Y-01	43210-WL000	-	D	NISSAN	ELGRAND (E51)	R	
KWH	ZA-/HO/51KWH01N-Y-01	40210-VW610	-	D	NISSAN	Caravan / Urvan (E25, -2011/10)	F	
KWH	ZA-/HO/51KWH01M-JB01 (old) ZA-/HO/51KWH01R-Y-01	40210-WL000 40210-WL020	-	D	NISSAN	ELGRAND (E51)	F	
	KWH	ZA-/HO/52KWH01-Y--01	3885A014	-	D	DAEWOO	DAEWOO NUBIRA (BK, Long body, 17 inch brake)	F
KWH	ZA-54KWH01B-Y-2-JB01 (old) ZA-54KWH01J-Y-2CA-01 (old) ZA-54KWH01M-Y-2CA-01 ZA-54KWH01R-Y-2CA-01	43570-60020 43570-60021 43570-04011(USA)	43570-60010 43570-60011	D	TOYOTA	FJ CRUISER (GSJ15W), HILUX SURF (KDN215, RZN210, 215, TRN210, 215, VZN210, 215, GRN215), LANDCRUISER PRADO (RZJ120, 125, TRJ120, 121, 150, KDJ120, 121, 125, GRJ120, 121, 150, 151, VZJ120, 121, 125), LEXUS GX (2002-2009), US TACOMA (Model year is unknown.)	F	
	KWH	ZA-54KWH02D-Y-2CA-01	43560-26010	-	D	TOYOTA	HIACE/REGIUSACE (KDH20#, 211, 22#, TRH200, 21#, 221, 223, 224, 226, 228), SUPER GRANDIA (KDH201V/K, KDH206V/K), QUANTUM (Mdel year is unknown.)	F

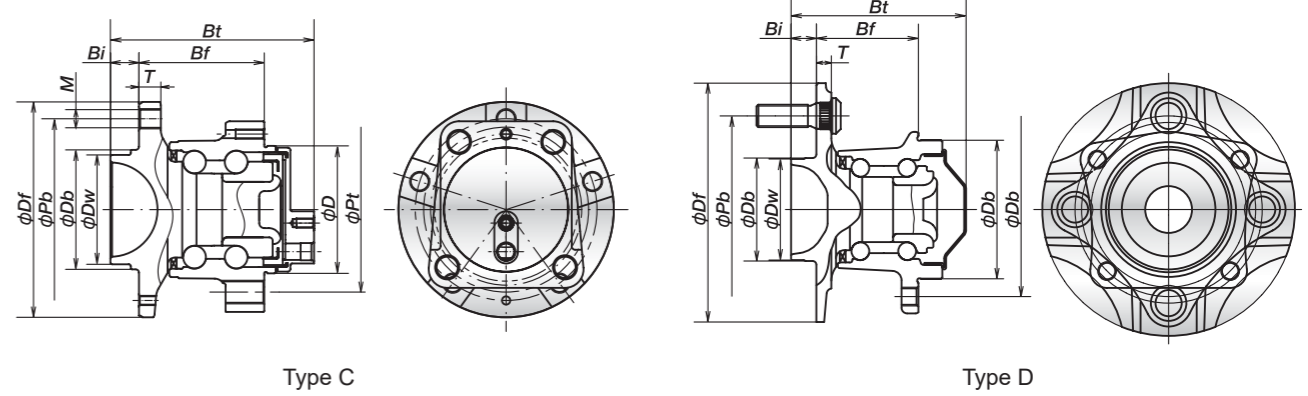
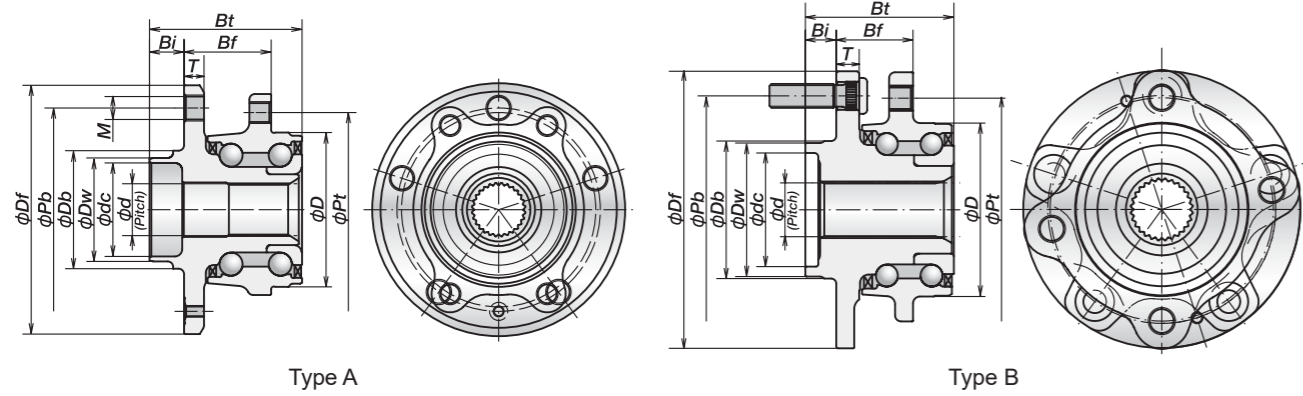
*1) F : Front Wheel *2) R : Rear Wheel

BOUNDARY DIMENSIONS (mm)																	N2 *3)	SEAL INTEGRAL TYPE	ABS SENSOR	MASS (kg) (approx)
d	D	B	b	rx (min)	ry (min)	Dr	d2	Ph	T	Bi	Pt	Ba	Df	Dw	Pb					
30	(67.4)	67.8	20.5	4	2.5	-	-	-	-	19	-	48.8	136.5	57	112	5	Yes	encoder	1.09	
28	65	51.8	21	3.6	3.6	(73)	61	97	-	-	-	-	-	-	-	4	Yes	-	1.05	
30	66	51.8	21	3.6	3.6	75	63	99	-	-	-	-	-	-	-	4	Yes	-	1.02	
30	66	51.8	21	3.6	3.6	75	63	99	-	-	-	-	-	-	-	4	Yes	-	1.20	
38	87.4	58	18	3.5	3.5	-	-	-	10	3.2	106	-	-	-	-	4	Yes	-	1.35	
43	83	42.5	22	5	3.5	-	-	-	14	16.5	102	-	-	-	-	4	Yes	-	1.22	
43	83	47.5	24.5	5	3.5	-	-	-	14	21.5	102	-	-	-	-	4	Yes	-	1.35	
61	102	40.5	15 +25.5	4	3.2	-	-	-	11.5	16.5	126	-	-	-	-	4	Yes	encoder	1.47	
50	86	55	27.5	5.5	5.5	-	-	-	12	32	112	-	-	-	-	4	Yes	-	1.50	
50	84	55	27.5	3.5	3.5	-	-	-	15	11	107	-	-	-	-	4	Yes	-	1.50	
51	87	55	27.5	5	5	-	-	-	15.5	19.5	112	-	-	-	-	4	Yes	-	1.73	
51	89	55	27.5	5	5	-	-	-	15.5	19.5	112	-	-	-	-	4	Yes	encoder	1.73	
52	91	53	26.5	6	6	-	-	-	12	27	121	-	-	-	-	4	Yes	-	1.80	
54	96	50.9	25.5	3.5	3.5	-	-	-	14	16.1	132	-	-	-	-	4	Yes	encoder	2.00	
54	90	59	29.5	3.5	3.5	-	-	-	15	25.3	120	-	-	-	-	4	Yes	-	2.00	

*3) N2 : No. of outer ring flange holes

Classification by bearing type and NSK P/N

BWKH type for driven/non-driven Wheels



BEARING TYPE	NSK No.	ORIGINAL No.-1	ORIGINAL No.-2	Drawing Type	MAKER	MODEL / TYPE (Information)	POSITION *1) *2)
BWKH	ZA-62BWKH01E-Y-01 E	6 776 671	—	A	BMW	MINI (R50 (M14*1.25), R56, R57)	F
BWKH	ZA-57BWKH04E2-Y-01 E	5Q0 407 621 B	—	A	VOLKSWAGEN	MQB1 (Car name is unknown.)	F
BWKH	ZA-60BWKH15A-Y-01 E	5Q0 407 621 A	—	A	VOLKSWAGEN	MQB2 (Car name is unknown.)	F
BWKH	ZA-60BWKH07R3-Y-01 E	1KO 407 621C [EU] 1KO 407 621G [US] 1KO 407 621 [CHINA]	—	A	VOLKSWAGEN	PQ35/PQ36 (4WD) AUDI : A3, TT SEAT : ALTEA, ALTEA XL, LEON, TOLEDO SKODA : OCTAVIA, SUPERB, YETI VW : CADDY VAN, GOLF, GOLF PLUS, SCIROCCO, TOURAN	R
BWKH	ZA-57BWKH04D1-Y-01 E	1KO 407 621E	—	A	VOLKSWAGEN	PQ35/PQ36 (FF) (For All until 1,9 l Diesel and < 77kw) AUDI : A3, TT SEAT : ALTEA, ALTEA XL, LEON, TOLEDO SKODA : OCTAVIA, SUPERB, YETI VW : CADDY VAN, GOLF, GOLF PLUS, SCIROCCO	F
BWKH	ZA-60BWKH07R3-Y-01 E	1KO 407 621C [EU] 1KO 407 621G [US] 1KO 407 621 [CHINA]	—	A	VOLKSWAGEN	PQ35/PQ36 (For All > 77kw) AUDI : A3 , TT SEAT : ALTEA, ALTEA XL, LEON, TOLEDO SKODA : OCTAVIA, SUPERB, YETI VW : CADDY VAN, GOLF, GOLF PLUS, SCIROCCO, TOURAN	F
BWKH	ZA-60BWKH06L-Y-01 F	02042L2235	—	B	GM	SATURN VUE (Less ABS) (Model year is unknown.) CHEVY EQUINOX (Less ABS) (Model year is unknown.)	R
BWKH	ZA-68BWKH02D-Y-01 F	02042K2078	—	B	GM	SATURN VUE (Less ABS) (Model year is unknown.) CHEVY EQUINOX (Less ABS) (Model year is unknown.)	F
BWKH	ZA-56BWKH06J-Y-01 E	1401393280 1440088280	—	C	PSA	JUMPY (G9, DISK BRAKE) EXPERT (G9, DISK BRAKE)	R
BWKH	ZA-56BWKH05D-Y-01 E	1400199280 1401393480	—	C	PSA	JUMPY (G9, DRUM BRAKE) EXPERT (G9, DRUM BRAKE)	R
BWKH	ZA-49BWKH22B-Y-01 E	6 756 830	—	C	BMW	MINI (R50, M12*1.5)	R
BWKHS	ZA-60BWKHS01L-Y-01 F	02042L2234	—	B	GM	SATURN VUE (With ABS) (Model year is unknown.) CHEVY EQUINOX (With ABS) (Model year is unknown.)	R
BWKHS	ZA-68BWKHS01E-Y-01 F	0204292072 02042K2077	—	B	GM	SATURN VUE (With ABS) (Model year is unknown.) CHEVY EQUINOX (With ABS) (Model year is unknown.)	F

*1) F : Front Wheel *2) R : Rear Wheel

BOUNDARY DIMENSIONS (mm)														N1 *3)	N2 *4)	SEAL INTEGRAL TYPE	ABS SENSOR	MASS (kg) (approx)
d	dc	Dw	Db	Pb	M	Df	D	Pt	T	Bi	Bf	Bt						
26	50	56	64	100	4-M14*1.25	137.5	81	102	11.4	19	44	70	—	4	yes	Encoder	—	
28.575	51.5	57	65	112	5-M14*1.5	136.5	80	102	11	19	48	84	—	3	yes	Encoder	—	
28.575	51.5	57	65	112	5-M14*1.5	136.5	81.5	107	12.6	19	48	84	—	3	yes	Encoder	—	
28.575	51.5	57	65	112	5-M14*1.5	136.5	81.5	107	11	19	48	84	—	4	yes	Encoder	—	
28.575	51.5	57	65	112	5-M14*1.5	136.5	80	102	11	19	48	84	—	3	yes	Encoder	—	
28.575	51.5	57	65	112	5-M14*1.5	136.5	81.5	107	11	19	48	84	—	4	yes	Encoder	—	
25.4	—	70.1	70.6	115	—	150	79	(100.6)	10	20	65	102.6	5	4	yes	Non	—	
34.29	—	70.1	70.6	115	—	150	91.25	116	10	20	42.06	96.01	5	3	yes	Non	—	
—	—	65	71	108	5-M12*1.25	128	75.77	98	13	17	107	153.6	—	4	Yes	Encoder	—	
—	—	65	71	108	5-M12*1.25	128	75.77	98	13	17	104.7	151.3	—	4	Yes	Encoder	—	
—	—	56	64	100	4-M12*1.5	137.5	74	93	11.8	19	56.5	87.8	—	4	yes	Encoder	—	
25.4	—	70.1	70.6	115	—	150	79	(100.6)	10	20	65	102.6	5	4	yes	Sensor	—	
34.29	—	70.1	70.6	115	—	150	91.25	116	10	20	42.06	96.01	5	3	no	Sensor	—	

*3) N1 : No. of flanged inner ring hub bolts *4) N2 : No. of outer ring flange tapped holes

Worldwide Sales Offices

P: Phone ☆: Head Office

NSK LTD. HEADQUARTERS, TOKYO JAPAN

INDUSTRIAL MACHINERY BUSINESS DIVISION-HEADQUARTERS P: +81-3-3779-7227
 AUTOMOTIVE BUSINESS DIVISION-HEADQUARTERS P: +81-3-3779-7189

Africa

South Africa:

NSK SOUTH AFRICA (PTY) LTD.
 SANDTON P: +27-011-458-3600

Asia and Oceania

Australia:

NSK AUSTRALIA PTY. LTD.
 MELBOURNE ☆ P: +61-3-9765-4400
 SYDNEY P: +61-2-9839-2300
 BRISBANE P: +61-7-3347-2600
 PERTH P: +61-8-9256-5000

New Zealand:

NSK NEW ZEALAND LTD.
 AUCKLAND P: +64-9-276-4992

China:

NSK (SHANGHAI) TRADING CO., LTD.
 JIANGSU ☆ P: +86-512-5796-3000

NSK (CHINA) INVESTMENT CO., LTD.

JIANGSU ☆ P: +86-512-5796-3000
 BEIJING P: +86-10-6590-8161
 TIAN JIN P: +86-22-8319-5030
 CHANGCHUN P: +86-431-8898-8682
 SHENYANG P: +86-24-2550-5017
 DALIAN P: +86-411-8800-8168
 NANJING P: +86-25-8472-6671
 FUZHOU P: +86-591-8380-1030
 WUHAN P: +86-27-8556-9630
 QINGDAO P: +86-532-5568-3877
 GUANGZHOU P: +86-20-3817-7800
 CHANGSHA P: +86-731-8571-3100
 LUOYANG P: +86-379-6069-6188
 XI'AN P: +86-29-8765-1896
 CHONGQING P: +86-23-6806-5310
 CHENGDU P: +86-28-8528-3680

NSK CHINA SALES CO., LTD.

JIANGSU ☆ P: +86-512-5796-3000

NSK HONG KONG LTD.

HONG KONG ☆ P: +852-2739-9933
 SHENZHEN P: +86-755-25904886

Taiwan:

TAIWAN NSK PRECISION CO., LTD.
 TAIPEI ☆ P: +886-2-2772-3355
 TAICHUNG P: +886-4-2708-3393
 TAINAN P: +886-6-215-6058

India:

NSK BEARINGS INDIA PRIVATE LTD.
 CHENNAI ☆ P: +91-44-28479600
 GURGAON P: +91-124-4838000
 MUMBAI P: +91-22-28387787
 JAMSHEDPUR P: +91-657-2421144

Indonesia:

PT. NSK INDONESIA
 JAKARTA P: +62-21-252-3458

Korea:

NSK KOREA CO., LTD.
 SEOUL P: +82-2-3287-0300

Malaysia:

NSK BEARINGS (MALAYSIA) SDN.BHD.
 SHAH ALAM ☆ P: +60-3-7803-8859
 PRAI P: +60-4-3902275
 JOHOR BAHRU P: +60-7-3546290
 IPOH P: +60-5-2555000

Philippines:

NSK REPRESENTATIVE OFFICE
 MANILA P: +63-2-893-9543

Singapore:

NSK INTERNATIONAL (SINGAPORE) PTE LTD.
 SINGAPORE P: +65-6496-8000

Thailand:

NSK BEARINGS (THAILAND) CO., LTD.
 BANGKOK P: +66-2320-2555

Vietnam:

NSK VIETNAM CO., LTD.
 HANOI P: +84-24-3955-0159
NSK REPRESENTATIVE OFFICE
 HO CHI MINH CITY P: +84-28-3822-7907

Europe

United Kingdom:

NSK EUROPE LTD. (EUROPEAN HEADQUARTERS)
 MAIDENHEAD P: +44-1628-509-800

NSK UK LTD.

NEWARK P: +44-1636-605-123

France:

NSK FRANCE S.A.S.
 PARIS P: +33-1-30-57-39-39

Germany:

NSK DEUTSCHLAND GMBH
 DUSSELDORF ☆ P: +49-2102-4810
 STUTTGART P: +49-711-79082-0
 WOLFSBURG P: +49-5361-27647-10

Italy:

NSK ITALIA S.P.A.
 MILANO P: +39-299-5191

Netherlands:

NSK EUROPEAN DISTRIBUTION CENTRE B.V.
 TILBURG P: +31-13-4647647

Poland:

NSK POLSKA SP.Z O.O.
 WARSAW P: +48-22-645-1525

Spain:

NSK SPAIN S.A.
 BARCELONA P: +34-93-289-2763

Turkey:

NSK RULMANLARI ORTA DOGU TIC. LTD. STI.
 ISTANBUL P: +90-216-5000-675

United Arab Emirates:

NSK BEARINGS GULF TRADING CO.
 DUBAI P: +971-(0)4-804-8200

North and South America

United States of America:

NSK AMERICAS, INC. (AMERICAN HEADQUARTERS)

ANN ARBOR P: +1-734-913-7500

NSK CORPORATION

ANN ARBOR P: +1-734-913-7500

NSK PRECISION AMERICA, INC.

FRANKLIN ☆ P: +1-317-738-5000

SAN JOSE P: +1-408-944-9400

NSK LATIN AMERICA, INC.

MIAMI P: +1-305-477-0605

Canada:

NSK CANADA INC.

TORONTO ☆ P: +1-888-603-7667

MONTREAL P: +1-514-633-1220

Argentina:

NSK ARGENTINA SRL

BUENOS AIRES P: +54-11-4704-5100

Brazil:

NSK BRASIL LTDA.

SUZANO ☆ P: +55-11-4744-2500

JOINVILLE P: +55-47-3422-2239

Peru:

NSK PERU S.A.C.

LIMA P: +51-493-4385

Mexico:

NSK RODAMIENTOS MEXICANA, S.A. DE C.V.

SILAO, GUANAJUATO P: +52-472-500-9500

< As of July 2022 >

For the latest information, please refer to the NSK website.

www.nsk.com

Every care has been taken to ensure the accuracy of data in this publication, but NSK Ltd. accepts no liability for any loss or damage incurred from errors or omissions. As we pursue continuous improvement, all content (text, images, product appearances, specifications, etc.) contained in this publication is subject to change without notice. Unauthorized copying and/or use of the contents of this publication is strictly prohibited. Please investigate and follow the latest product export laws, regulations, and permit procedures when exporting to other countries.

For more information about NSK products, please contact: _____

